

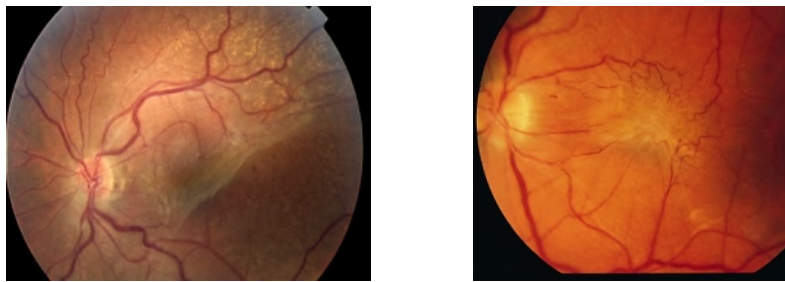
**Mr Vaughan Tanner**  
*BSc MBBS FRCOphth*  
Consultant Ophthalmic Surgeon

**Telephone:** 0800 644 0900  
0800 644 0700

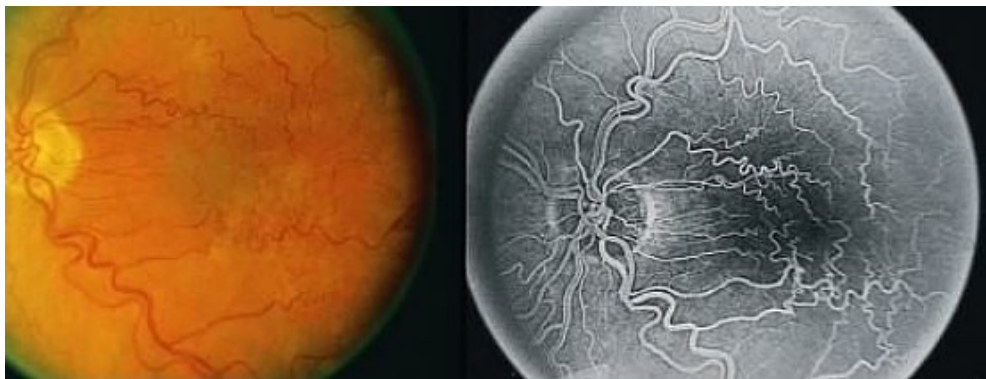
<http://www.tanner-eyes.co.uk>

## Patient Information: Epiretinal Membrane

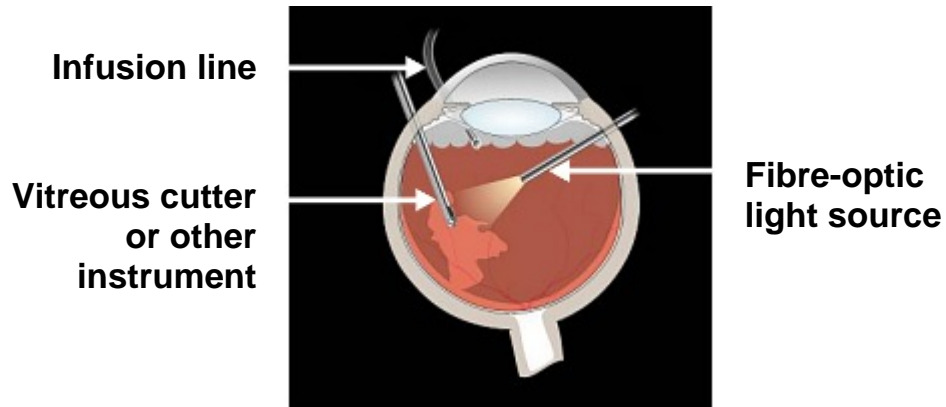
---



Epiretinal membrane (macular pucker/cellophane maculopathy) is the name given to a form of scar tissue which grows across the macular area of the retina. It is occasionally caused by trauma or inflammation affecting the eye but in the vast majority of cases is related simply to an ageing eye and degeneration of the vitreous gel. Symptoms include blurring of vision and distortion although many membranes are asymptomatic and noted during a routine visit to the optician. In many cases symptoms are only mild and non-progressive with no requirement for surgery.



In a few cases the retina is pulled out of position by a contracting membrane with distortion of the retinal vessels often best seen with fluorescein angiography as in the pictures above. If distortion is marked then membranes are usually removed via pars plana vitrectomy surgery as shown below.



**Per-operative view showing epi-retinal membrane being removed with micro-forceps**



---

**Disclaimer**

*The information provided in this document is intended as a useful aid to general practitioners, optometrists and patients. It is impossible to diagnose and treat patients adequately without a thorough eye examination by a qualified ophthalmologist, optometrist or your general practitioner. Hopefully the information will be of use prior to and following a consultation which it supplements and does not replace.*

**Copyright**

*All images and graphics used in this document are subject to copyright law. Mr Tanner is particularly grateful to Mr JJ Kanski and for allowing reproduction of several of his clinical photos on this document.*